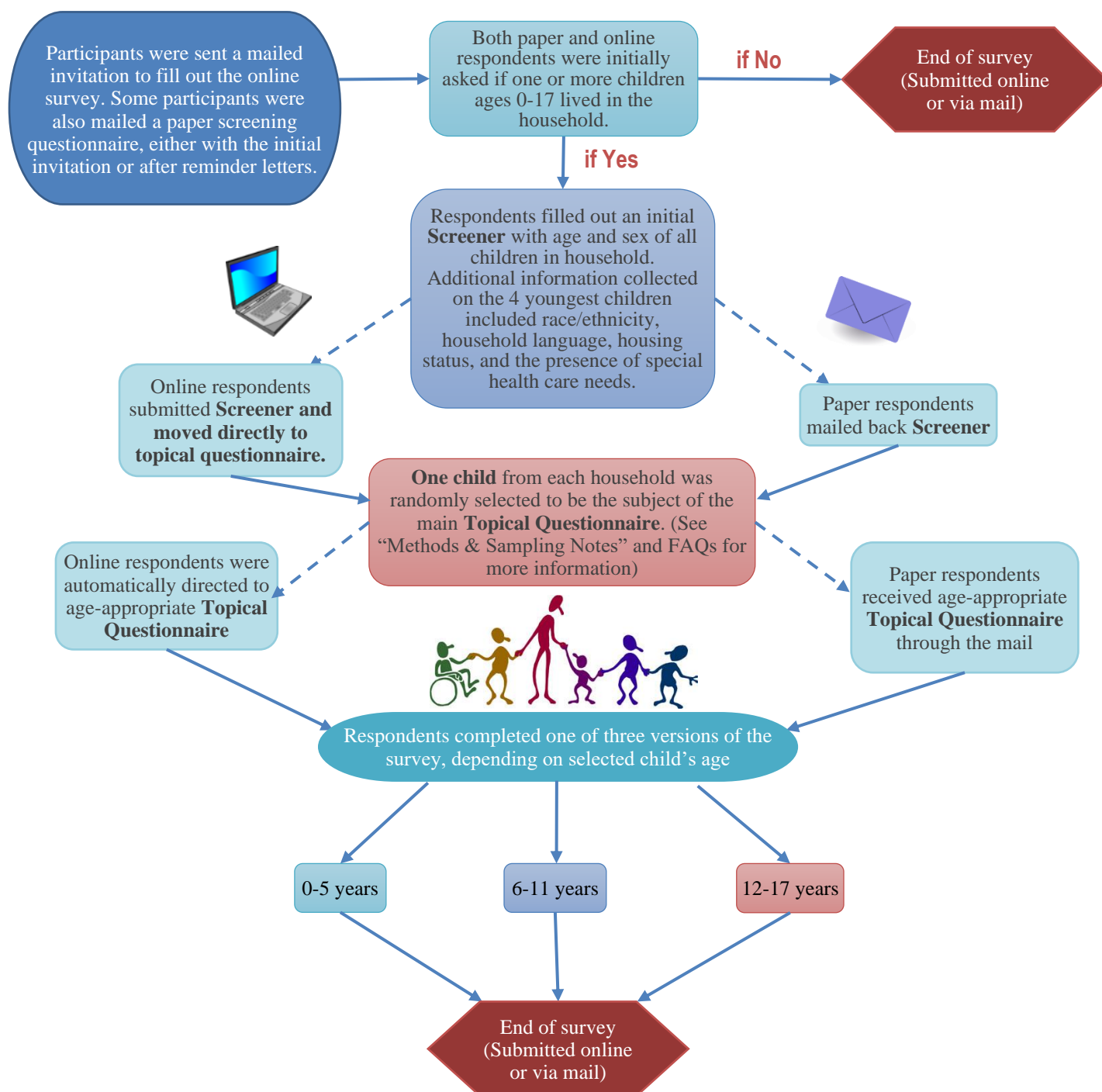


2019 National Survey of Children's Health (NSCH)

Sampling and Survey Administration

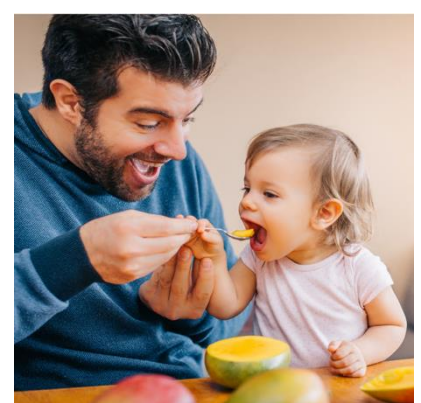
The 2019 *National Survey of Children's Health* was administered online and by mail. Randomly selected addresses from households across the United States were mailed instructions to access the survey online; some addresses also received a paper version of the screening questionnaire. After two reminder letters and postcard reminders to complete the survey by web, those households who had not accessed the online survey were mailed a paper screening questionnaire. Please see the "Methods & Sampling Notes" section below or the NSCH [Methodology Report](#) and the [Data User Frequently Asked Questions \(FAQs\)](#) for more information on this process.

Survey Administration



Methods & Sampling Notes

- To increase sampling efficiency, administrative data were used to determine addresses that were more likely to be households with children aged 0-17 years.
- The survey over-sampled children 0-5 years and children with special health care needs (CHSCN). This means that in households with 2 or more children, CHSCN and children 0-5 years old had a higher probability of being selected as compared to other children in the household.
- Number of surveys completed in 2019:
 - Approximately 180,000 households screened for age-eligible children in sampled addresses
 - 67,625 children reported on completed screeners
 - 29,433 child-level questionnaires completed (state ranges from 474 to 651)
 - 7,021 of topical questionnaires completed on CHSCN.
- To view the questionnaires in English or Spanish, see: <https://mchb.hrsa.gov/data/national-surveys/questionnaires-datasets-supporting-documents>. In addition, respondents could access telephone-based assistance to complete the questionnaire in additional languages.
- For more detailed information on the NSCH, see: <https://mchb.hrsa.gov/data/national-surveys>, <http://childhealthdata.org/learn/NSCH>, and <https://www.census.gov/programs-surveys/nsch.html>.



Citation: Child and Adolescent Health Measurement Initiative. (2020). "2019 National Survey of Children's Health, Sampling and Survey Administration." Data Resource Center for Child and Adolescent Health, supported by the U.S. Department of Health and Human Services, Health Resources and Services Administration (HRSA), Maternal and Child Health Bureau (MCHB). Retrieved [mm/dd/yy] from [www.childhealthdata.org].

This project is supported by the Health Resources and Services Administration (HRSA) of the U.S. Department of Health and Human Services (HHS) under grant number U59MC27866, National Maternal and Child Health Data Resource Initiative, \$4.5M. This information or content and conclusions are those of the author and should not be construed as the official position or policy of, nor should any endorsements be inferred by HRSA, HHS, or the U.S. Government.